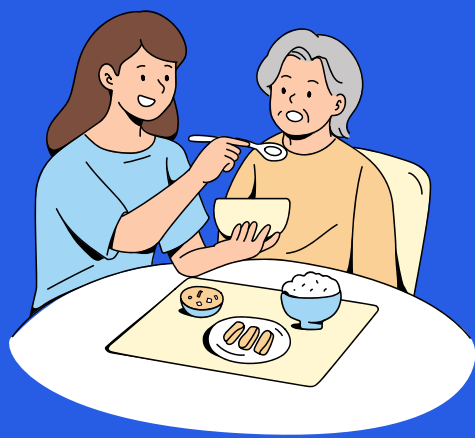


WHAT IS PERSONAL CARE?



Personal Care (PC) services are support services necessary to enable the Medicaid waiver member to remain at or return home rather than enter a nursing facility.

Personal Care Services Include:

Assistance with activities of daily living (ADLs)

Access to the community

Self-administration of medication or other medical needs

Monitoring of health status and physical condition



Examples

Personal care includes assisting a Medicaid waiver member with their bathing, transferring, meal preparation, and toileting needs.

PC Services DO NOT Include skilled services like tracheostomy or g-tube care.



Aides and attendants are not permitted to sleep while being paid for PC services.

PERSONAL CARE (PC) SERVICES ARE MEANT TO PROVIDE MEMBER SUPPORT BOTH AT HOME AND IN THE COMMUNITY.



WITH PROPER SUPPORT, THEIR GOALS ARE LIMITLESS!

